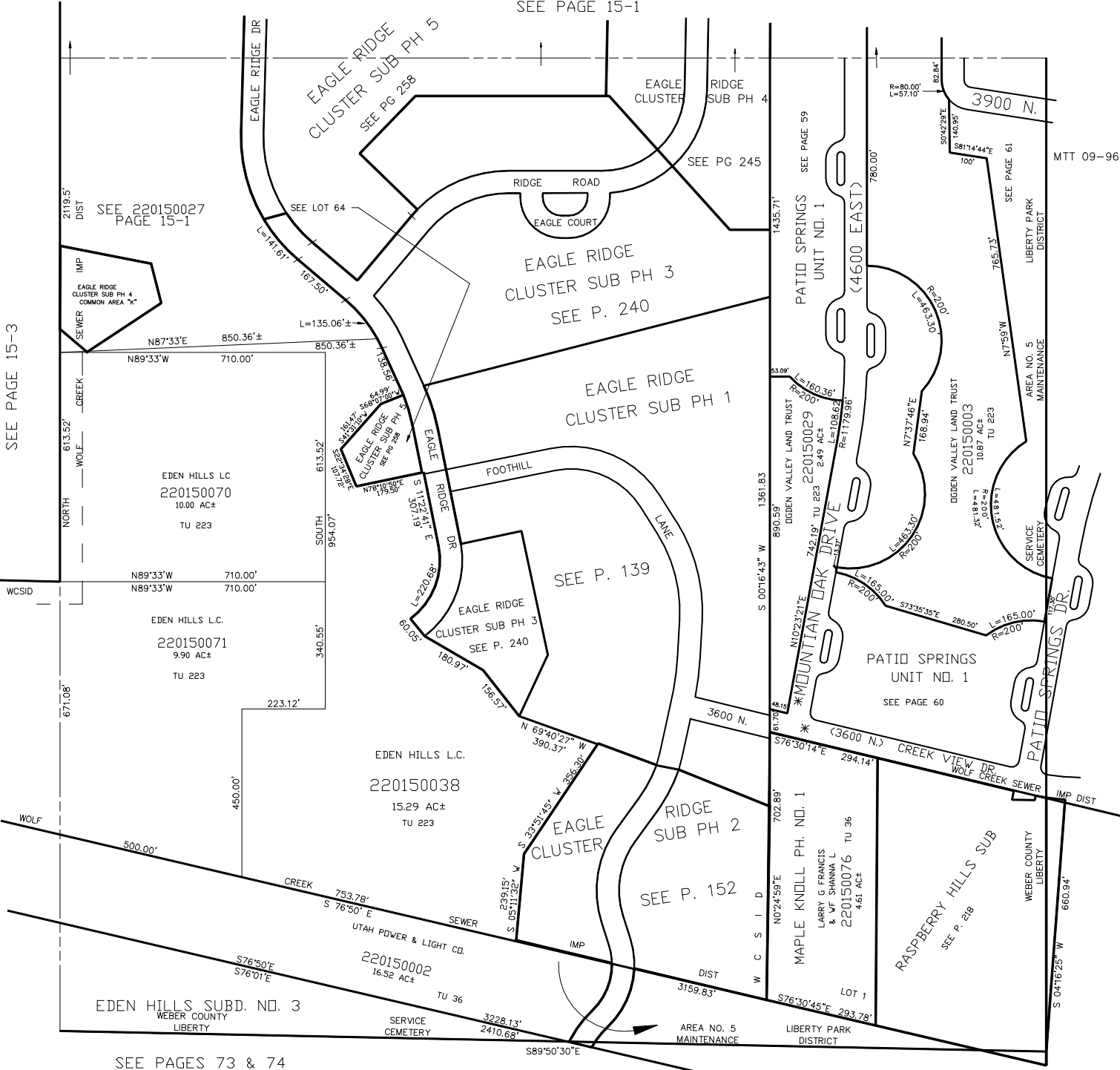


S.E. 1/4 OF SECTION 21, T.7N., R.1E., S.L.B. & M.

IN WEBER COUNTY  
SCALE 1" = 200'  
SEE PAGE 15-1

TAXING UNIT: 36, 223

SEE PAGE 15-3



SEE PAGES 73 & 74

\* ST. NAME CHANGE 19-JAN-95  
1744-1014

SEE PAGE 22-1

SEE PAGE 16